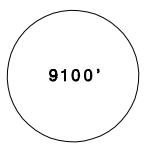
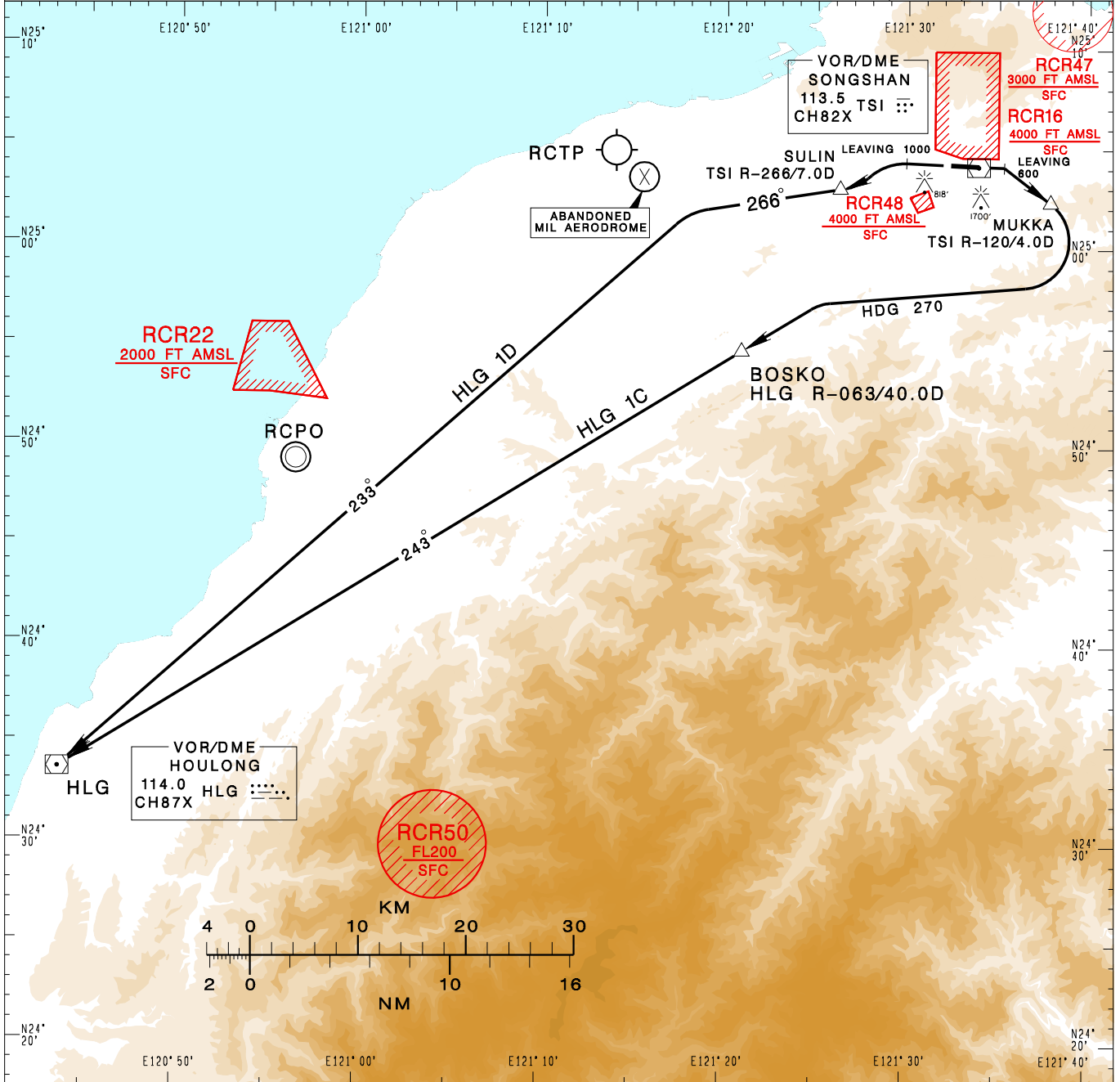


**臺北/松山機場**  
TAIPEI/SONGSHAN AD

RCSS SID  
HLG 1C(RWY10)  
HLG 1D(RWY28)

TAIPEI APP 119.7 119.6 125.1	SONGSHAN TWR 118.1	ATIS 127.4 341	 <p>9100'</p> <p>MSA APP 25NM</p>	
Apt Elev: 18'		Trans Level: FL130		Trans Alt: 11,000'
BEARINGS ARE MAGNETIC; DISTANCES ARE NAUTICAL MILES; ELEVATIONS, HEIGHTS IN FEET				



**HOULONG ONE CHARLIE DEPARTURE**  
Climb on RWY HDG until 600ft, then track TSI R-120 to MUKKA, after passing MUKKA, turn right HDG 270 to intercept HLG R-063 to BOSKO, then HLG.

**HOULONG ONE DELTA DEPARTURE**  
Climb on RWY HDG until 1000ft, then turn left to track TSI R-266 to SULIN, then continue TSI R-266 to intercept HLG R-053 to HLG.

- NOTE**
- HLG 1C:  
Minimum climb gradient required: 7.4%(450ft/NM) until MUKKA, then 5.0%(304ft/NM) until BOSKO.  
Speed restriction: MAX 230KT IAS until BOSKO.
  - HLG 1D:  
Minimum climb gradient required: 7.4%(450ft/NM) until SULIN.  
Speed restriction: MAX 250KT IAS until SULIN.
  - ATS surveillance required.
  - Caution high terrain around airport.
  - A 1700ft-high BLDG at 2.1NM south of THR 28.
  - A 818ft-high BLDG at 2 NM SW of THR 10.

CHANGES: NEW CHART